

CITY OF KELOWNA

BYLAW NO. 10456

Official Community Plan Amendment No. OCP10-0011 - Various Owners and Addresses - Mapping Housingkeeping Amendments

A bylaw to amend the "*Kelowna 2020* - Official Community Plan Bylaw No. 7600".

The Municipal Council of the City of Kelowna, in open meeting assembled, enacts as follows:

1. THAT Map 19.1 - **GENERALIZED FUTURE LAND USE** of Schedule "A" of "*Kelowna 2020* - Official Community Plan Bylaw No. 7600" be amended by changing the Generalized Future Land Use designation of Lots 27, 28, 29, 30, 31, 32 and 33, District Lot 1688S, SDYD, Plan KAP82069 located on Kuipers Crescent, Kelowna, B.C., from the Major Park/Open Space designation to the Single/Two Unit Residential designation as per Map "1A" attached to and forming part of this bylaw;
2. THAT Map 19.1 - **GENERALIZED FUTURE LAND USE** of Schedule "A" of "*Kelowna 2020* - Official Community Plan Bylaw No. 7600" be amended by changing the Generalized Future Land Use designation of Part of Lots 10, 11 and 14, District Lot 1688S, SDYD, Plan KAP84694 located on Kuipers Crescent and Lots 12 and 13, District Lot 1688S, SDYD, Plan KAP84694, located on Clarence Avenue, Kelowna, B.C., from the Major Park/Open Space designation to the Single/Two Unit Residential designation and Lot 27, District Lot 1688S, SDYD, Plan KAP84694 located on Kuipers Crescent and Clarence Avenue from the Single/Two Unit Residential designation to the Major Park/Open Space designation as per Map "2A" attached to and forming part of this bylaw;
3. THAT Map 19.1 - **GENERALIZED FUTURE LAND USE** of Schedule "A" of "*Kelowna 2020* - Official Community Plan Bylaw No. 7600" be amended by changing the Generalized Future Land Use designation of Part of Lot A, District Lot 1688S, SDYD, Plan KAP68646 Except Plans KAP68647, KAP70485, KAP71342, KAP72474, KAP74275, KAP74684, KAP76064, KAP79204, KAP82069, KAP82290 and KAP84694, located on Kuipers Crescent, Kelowna, B.C., from the Single/Two Unit Residential designation to the Major Park/Open Space designation as per Map "3A" attached to and forming part of this bylaw;
4. THAT Map 19.1 - **GENERALIZED FUTURE LAND USE** of Schedule "A" of "*Kelowna 2020* - Official Community Plan Bylaw No. 7600" be amended by changing the Generalized Future Land Use designation of Part of Lot 3, District Lot 124, ODYD, Plan KAP84653, located on McCurdy Road, Kelowna, B.C., from the Industrial designation to the Major Park/Open Space designation as per Map "4A" attached to and forming part of this bylaw;

5. THAT Map 19.1 - **GENERALIZED FUTURE LAND USE** of Schedule "A" of "*Kelowna 2020 - Official Community Plan Bylaw No. 7600*" be amended by changing the Generalized Future Land Use designation of Strata Lot 1, District Lot 14, ODYD, Strata Plan KAS2898, located on Wardlaw Avenue, Kelowna, B.C., from the Single/Two Unit Residential designation to the Multiple Unit Residential (Low Density) designation as per Map "5A" attached to and forming part of this bylaw;
6. THAT Map 19.1 - **GENERALIZED FUTURE LAND USE** of Schedule "A" of "*Kelowna 2020 - Official Community Plan Bylaw No. 7600*" be amended by changing the Generalized Future Land Use designation of Lot 1, Section 32, Township 26, ODYD, Plan KAP56656, located on Spruceglen Drive, Kelowna, B.C., from the Single/Two Unit Residential designation to the Major Park/Open Space designation as per Map "7" attached to and forming part of this bylaw;
7. AND THAT pursuant to Section 882 of the *Local Government Act*, each reading of this bylaw receive an affirmative vote of a majority of all members of the Council;
8. This bylaw shall come into full force and effect and is binding on all persons as and from the date of adoption.

Read a first time by the Municipal Council this 22nd day of November, 2010.

Considered at a Public Hearing on the

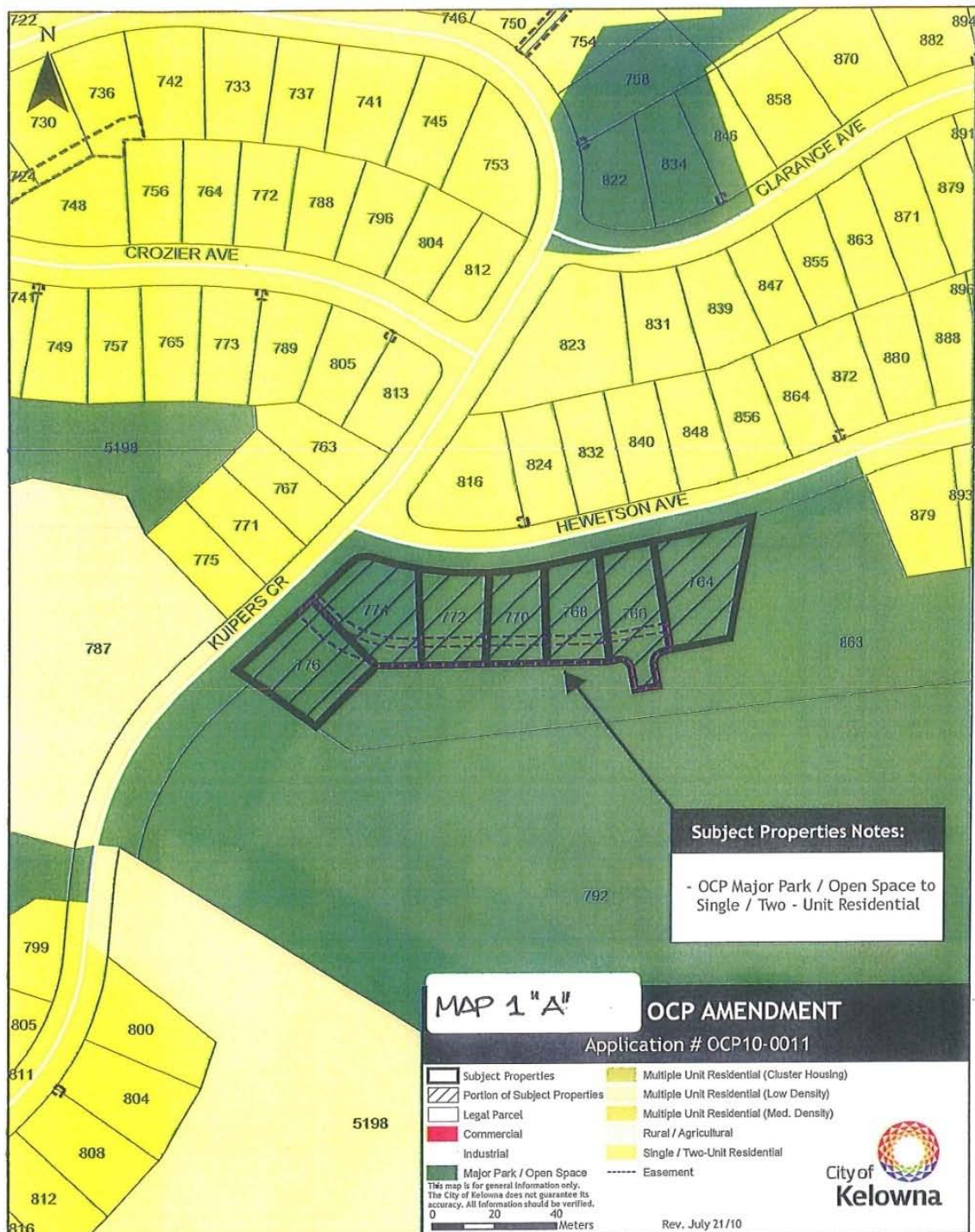
Read a second and third time by the Municipal Council this

Adopted by the Municipal Council of the City of Kelowna this

Mayor

City Clerk

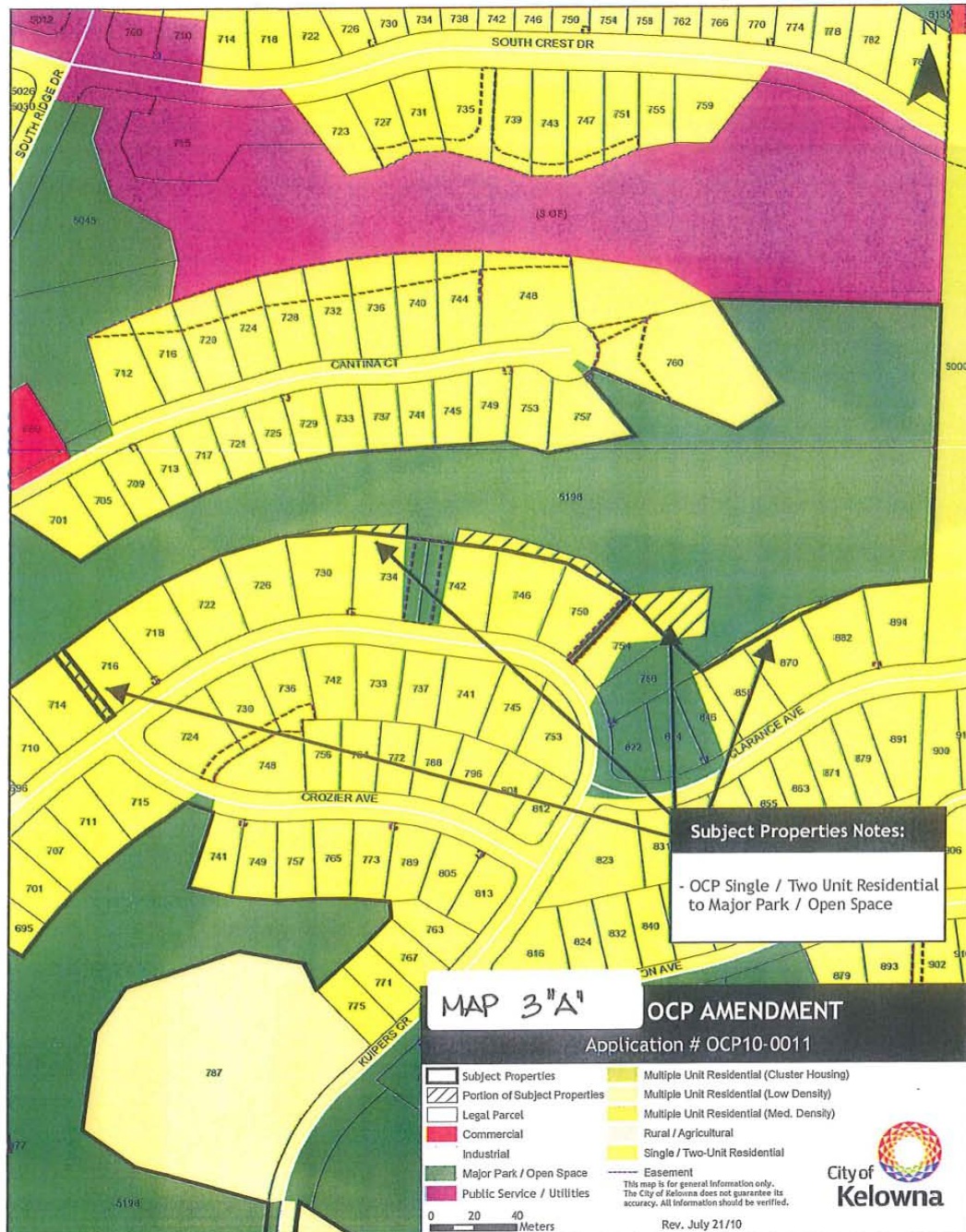
Map "1A"



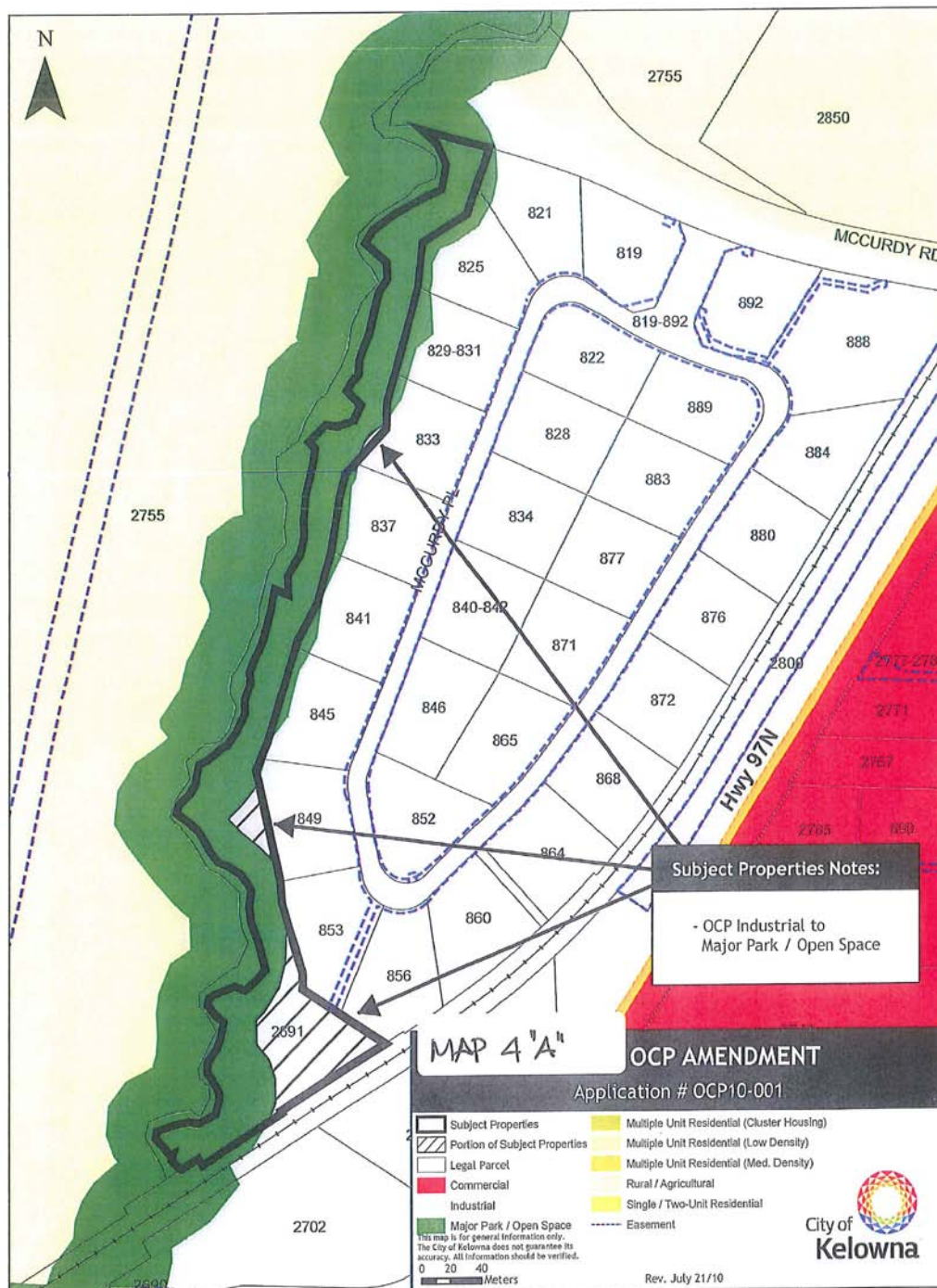
Map "2A"



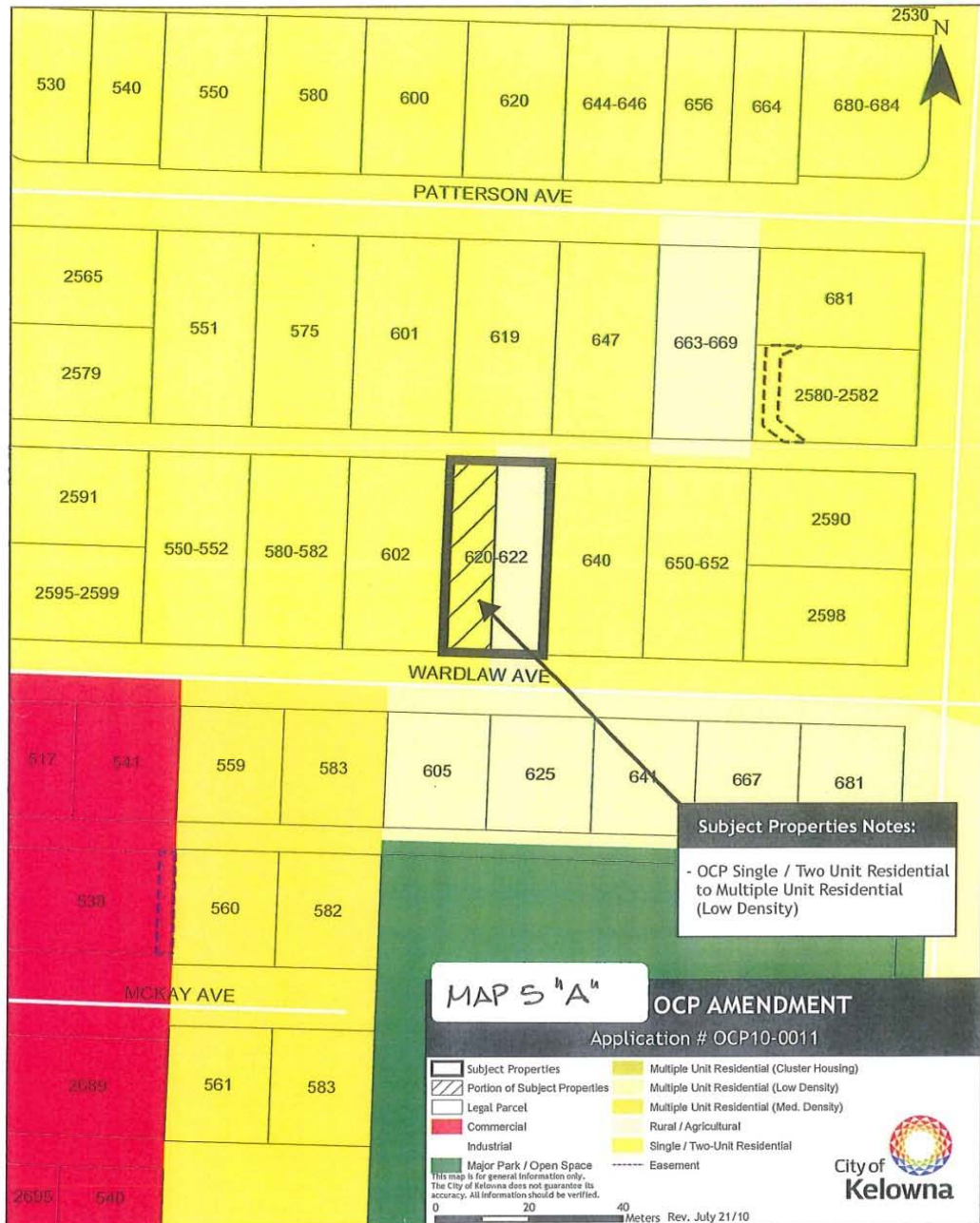
Map "3A"



Map “4A”



Map "5A"



Map “7”

